

## Daily**Technical**Analysis

---

The technical Buy/Sell signals contained in this report were generated as a result of the 09.10.06 closing prices

**Angela Mangan**

Tel (613) 9235 1677

■ [amangan@bellpotter.com.au](mailto:amangan@bellpotter.com.au)

**Important Disclaimer—This may affect your legal rights:** Because this document has been prepared without consideration of any specific client's financial situation, particular needs and investment objectives, a Bell Potter Securities Limited investment adviser (or the financial services licensee, or the proper authority of such licensee, who has provided you with this report by arrangement with Bell Potter Securities Limited) should be consulted before any investment decision is made. While this document is based on the information from sources which are considered reliable, Bell Potter Securities Limited, its directors, employees and consultants do not represent, warrant or guarantee, expressly or impliedly, that the information contained in this document is complete or accurate. Nor does Bell Potter Securities Limited accept any responsibility to inform you of any matter that subsequently comes to its notice, which may affect any of the information contained in this document. This document is a private communication to clients and is not intended for public circulation or for the use of any third party, without the prior approval of Bell Potter Securities Limited. This is general securities advice only and does not constitute advice to any person. **Disclosure of Interest:** Bell Potter Securities Limited receives commission from dealing in securities and its authorised representatives, or introducers of business, may directly share in this commission. Bell Potter Securities and its associates may hold shares in the companies recommended.

Date of issue  
**09.10.06**

# Technical Stock Watch

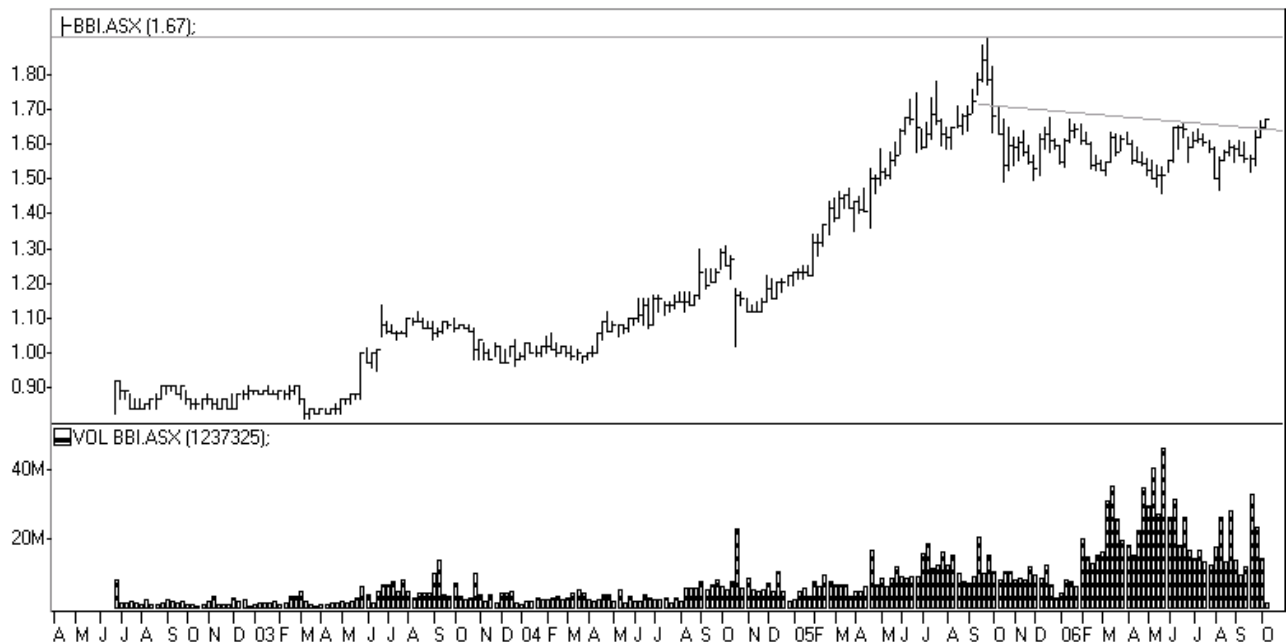
**BBI has reported an upward technical break, which indicates the potential for additional upside from current levels, a view based *solely* on technical analysis.**

## **Babcock & Brown Infrastructure Group (BBI) (\$1.665)**

**Recommendation: BUY for a target of \$1.90.**

BBI originally generated a technical **buy** signal at **\$1.70** (as detailed in 21/12/05 Technical Stockwatch).

BBI has completed a further upward reversal / closed above key resistance thereby generating a new technical **buy** signal which re-enforces the expectation for a rally to **\$1.90**.



Acknowledgement: Charts sourced from IRESS charting  
Technical Stockwatch Bulletins are published when stocks we analyse report significant technical breaks.

**Angela Mangan**  
Tel (613) 9235 1677  
■ amangan@bellpotter.com.au

**Important Disclaimer—This may affect your legal rights:** Because this document has been prepared without consideration of any specific client's financial situation, particular needs and investment objectives, a Bell Potter Securities Limited investment adviser (or the financial services licensee, or the proper authority of such licensee, who has provided you with this report by arrangement with Bell Potter Securities Limited) should be consulted before any investment decision is made. While this document is based on the information from sources which are considered reliable, Bell Potter Securities Limited, its directors, employees and consultants do not represent, warrant or guarantee, expressly or impliedly, that the information contained in this document is complete or accurate. Nor does Bell Potter Securities Limited accept any responsibility to inform you of any matter that subsequently comes to its notice, which may affect any of the information contained in this document. This document is a private communication to clients and is not intended for public circulation or for the use of any third party, without the prior approval of Bell Potter Securities Limited. This is general securities advice only and does not constitute advice to any person. **Disclosure of Interest:** Bell Potter Securities Limited receives commission from dealing in securities and its authorised representatives, or introducers of business, may directly share in this commission. Bell Potter Securities and its associates may hold shares in the companies recommended.

Date of issue

09.10.06

# Technical Stock Watch

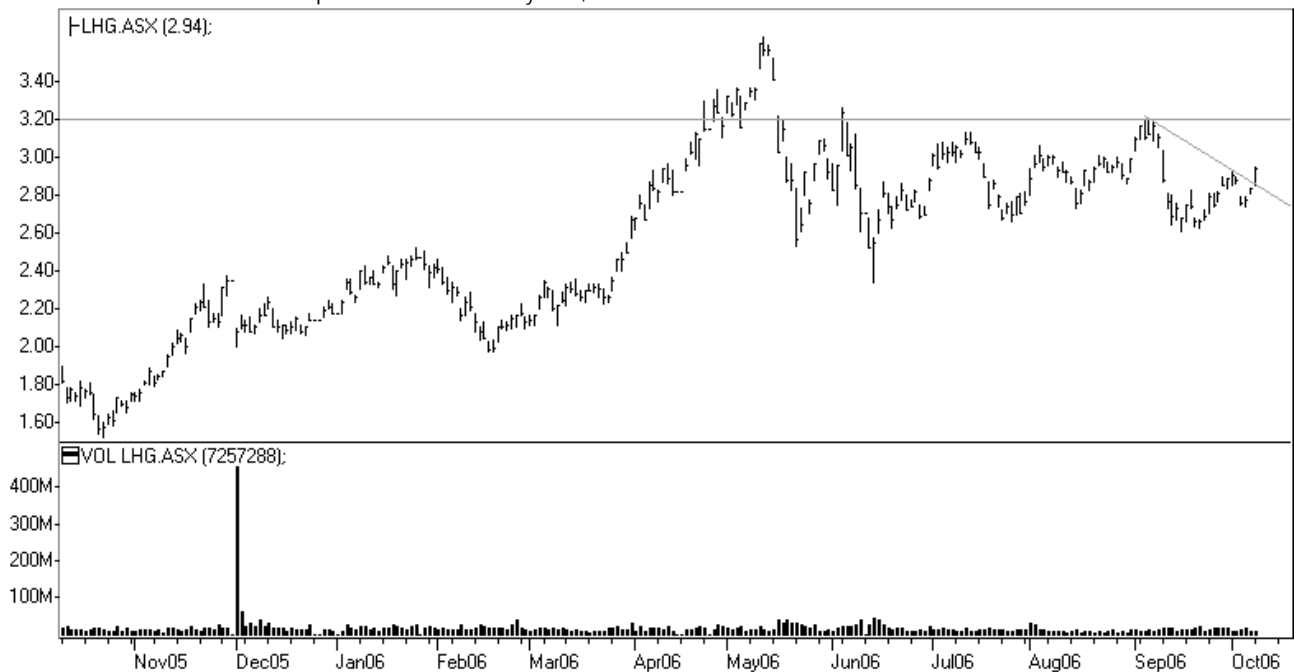
**LHG has reported an upward technical break, which indicates the potential for additional upside from current levels, a view based *solely* on technical analysis.**

## Lihir Gold (LHG) (\$2.95)

**Recommendation: BUY for a target of \$3.20**

LHG previously generated a technical **buy** signal at **\$2.85** (as detailed in 28/9/06 Technical Stockwatch).

LHG has completed a further upward reversal / closed above key resistance thereby generating a new technical **buy** signal which re-enforces the expectation for a rally to **\$3.20**.



Acknowledgement: Charts sourced from IRESS charting  
 Technical Stockwatch Bulletins are published when stocks we analyse report significant technical breaks.

**Angela Mangan**  
 Tel (613) 9235 1677  
 ■ amangan@bellpotter.com.au

**Important Disclaimer—This may affect your legal rights:** Because this document has been prepared without consideration of any specific client's financial situation, particular needs and investment objectives, a Bell Potter Securities Limited investment adviser (or the financial services licensee, or the proper authority of such licensee, who has provided you with this report by arrangement with Bell Potter Securities Limited) should be consulted before any investment decision is made. While this document is based on the information from sources which are considered reliable, Bell Potter Securities Limited, its directors, employees and consultants do not represent, warrant or guarantee, expressly or impliedly, that the information contained in this document is complete or accurate. Nor does Bell Potter Securities Limited accept any responsibility to inform you of any matter that subsequently comes to its notice, which may affect any of the information contained in this document. This document is a private communication to clients and is not intended for public circulation or for the use of any third party, without the prior approval of Bell Potter Securities Limited. This is general securities advice only and does not constitute advice to any person. **Disclosure of Interest:** Bell Potter Securities Limited receives commission from dealing in securities and its authorised representatives, or introducers of business, may directly share in this commission. Bell Potter Securities and its associates may hold shares in the companies recommended.

## BELL POTTER OFFICES

[www.bellpotter.com.au](http://www.bellpotter.com.au)

[info@bellpotter.com.au](mailto:info@bellpotter.com.au)

TOLL FREE 133 788

ABN 25 006 390 772

AFS Licence No. 243480

### ADELAIDE

LEVEL 6, DA COSTA BUILDING  
68 GRENFELL STREET  
ADELAIDE SA 5000  
TEL: 08 8224 2722  
FAX: 08 8224 2799

### BRISBANE

LEVEL 17, 10 EAGLE STREET  
BRISBANE QLD 4000  
TEL: 07 3295 2600  
FAX: 07 3295 2688

### CAIRNS

CNR SPENCE & GRAFTON STREETS  
CAIRNS QLD 4870  
TEL: 07 4047 4188  
FAX: 07 4047 4199

### GEELONG

LEVEL 1, 122 YARRA STREET  
GEELONG VIC 3220  
TEL: 03 5227 7000  
FAX: 03 5227 7099

### GOLD COAST

LEVEL 8, 50 CAVILL AVENUE  
SURFERS PARADISE QLD 4217  
TEL: 07 5554 4333  
FAX: 07 5554 4399

### HOBART

LEVEL 9, AMP BUILDING  
86 COLLINS STREET  
HOBART TAS 7000  
TEL: 03 6231 1677  
FAX: 03 6231 3744

### MACKAY

CITY COURT, 78 VICTORIA STREET  
MACKAY QLD 4740  
TEL: 07 4957 6996  
FAX: 07 4951 4114

### MELBOURNE

LEVEL 29, 101 COLLINS STREET  
MELBOURNE VIC 3000  
TEL: 03 9256 8700  
FAX: 03 9256 8787

### MORNINGTON

SUITE 1, 330 MAIN STREET  
MORNINGTON VIC 3931  
TEL: 03 5970 0101  
FAX: 03 5970 0199

### PERTH

LEVEL 37, EXCHANGE PLAZA  
2 THE ESPLANADE  
PERTH WA 6000  
TEL: 08 9326 7666  
FAX: 08 9326 7676

### SYDNEY

LEVEL 33, 225 GEORGE STREET  
SYDNEY NSW 2000  
TEL: 02 9255 7200  
FAX: 02 9255 7227

### TOOWOOMBA

3 DUGGAN STREET  
TOOWOOMBA QLD 4350  
TEL: 07 4638 5988  
FAX: 07 4639 2608

### WOLLONGONG

LEVEL 1, 166 KEIRA STREET  
WOLLONGONG NSW 2500  
TEL: 02 4228 0390  
FAX: 02 4228 1073

**Important Disclaimer—This may affect your legal rights:** Because this document has been prepared without consideration of any specific client's financial situation, particular needs and investment objectives, a Bell Potter Securities Limited investment adviser (or the financial services licensee, or the proper authority of such licensee, who has provided you with this report by arrangement with Bell Potter Securities Limited) should be consulted before any investment decision is made. While this document is based on the information from sources which are considered reliable, Bell Potter Securities Limited, its directors, employees and consultants do not represent, warrant or guarantee, expressly or impliedly, that the information contained in this document is complete or accurate. Nor does Bell Potter Securities Limited accept any responsibility to inform you of any matter that subsequently comes to its notice, which may affect any of the information contained in this document. This document is a private communication to clients and is not intended for public circulation or for the use of any third party, without the prior approval of Bell Potter Securities Limited. This is general investment advice only and does not constitute advice to any person.

**Disclosure of Interest:** Bell Potter Securities Limited receives commission from dealing in securities and its authorised representatives, or introducers of business, may directly share in this commission. Bell Potter Securities and its associates may hold shares in the companies recommended.